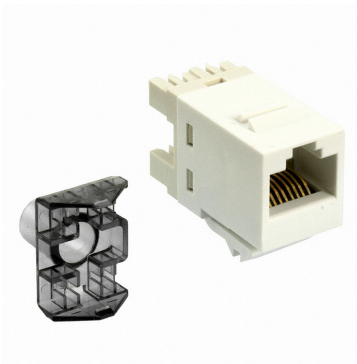


# 1-1375055-3



SL110 Series Modular Jack, RJ45, category 6, T568A/T568B, unshielded, without dust cover, alpine white

## Product Classification

<b>Regional Availability</b>	Asia   Australia/New Zealand   EMEA   Latin America
<b>Portfolio</b>	NETCONNECT®
<b>Product Type</b>	Modular jack
<b>Product Series</b>	SL Series

## General Specifications

<b>ANSI/TIA Category</b>	6
<b>Cable Type</b>	Unshielded
<b>Color</b>	Alpine white
<b>Conductor Type</b>	Solid   Stranded
<b>Integrated Dust Cover Type</b>	None
<b>Mounting</b>	SL Series faceplates and panels
<b>Mounting Note</b>	Color matches with SL-style Alpine white or Pro white Faceplates and Surface Mount Boxes
<b>Outlet Feature</b>	Inverted jack face
<b>Outlet Type</b>	Standard
<b>Termination Punchdowns, minimum</b>	200 times
<b>Termination Tool</b>	SL Termination tool
<b>Termination Type</b>	IDC
<b>Transmission Standards</b>	ANSI/TIA-568.2-D   ISO/IEC 11801 Class E
<b>Wiring</b>	T568A   T568B

## Dimensions

<b>Panel Cutout, recommended</b>	14.78 x 20.07 mm (0.58 x 0.79 in)
----------------------------------	-----------------------------------

# 1-1375055-3

---

<b>Panel Thickness, recommended</b>	1.6 mm   0.063 in
<b>Height</b>	16.13 mm   0.635 in
<b>Width</b>	14.48 mm   0.57 in
<b>Depth</b>	30.48 mm   1.2 in
<b>Compatible Cable Diameter, maximum</b>	5.8 mm   0.228 in
<b>Compatible Insulated Conductor Diameter, maximum</b>	1.45 mm   0.057 in
<b>Contact Plating Thickness</b>	1.27 $\mu$ m
<b>Compatible Conductor Gauge, solid</b>	24–22 AWG
<b>Compatible Conductor Gauge, stranded</b>	26–24 AWG

## Electrical Specifications

<b>Contact Resistance Variation, maximum</b>	20 mOhm
<b>Contact Resistance, maximum</b>	100 mOhm
<b>Current Rating at Temperature</b>	1.5 A @ 20 °C   1.5 A @ 68 °F
<b>Dielectric Withstand Voltage, RMS, conductive surface</b>	1,500 Vac @ 60 Hz
<b>Dielectric Withstand Voltage, RMS, contact-to-contact</b>	1,000 Vac @ 60 Hz
<b>Insulation Resistance, minimum</b>	500 mOhm
<b>Remote Powering</b>	Fully supports the safe delivery of power over LAN cabling described by IEEE 802.3bt (Type 4) and complies with the unmating under electrical load requirements prescribed by IEC 60512-99-002
<b>PoE Durability</b>	Supports IEEE 802.3bt Type 4 (90 W) applications after 3000 plug to jack mating cycles
<b>Safety Voltage Rating</b>	150 Vac

## Material Specifications

<b>Contact Base Material</b>	Beryllium copper
<b>Contact Plating Material</b>	Gold
<b>Material Type</b>	Polycarbonate
<b>Termination Contact Plating</b>	Tin

## Mechanical Specifications

<b>Plug Insertion Life, minimum</b>	750 times
<b>Plug Insertion Life, test plug</b>	IEC 60603-7 compliant plug
<b>Plug Retention Force, minimum</b>	50 N   11.24 lbf

# 1-1375055-3

---

## Plug to Jack Mating Cycles

Complies to IEC 60603-7 series

## Environmental Specifications

### Operating Temperature

-10 °C to +60 °C (+14 °F to +140 °F)

### Flammability Rating

UL 94 V-0

### Safety Standard

UL | cUL

## Packaging and Weights

### Included

Strain relief cap

### Packaging quantity

1

### Packaging Type

Bag

## Regulatory Compliance/Certifications

### Agency

### Classification

CHINA-ROHS

Below maximum concentration value

RCM

Compliant to electrical safety & telecommunications requirements

REACH-SVHC

Compliant as per SVHC revision on [www.commscope.com/ProductCompliance](http://www.commscope.com/ProductCompliance)

ROHS

Compliant

UK-ROHS

Compliant

